

ÉDITORIAL

L'écologie viendra-t-elle au secours de l'humanité ?
E. LOFFEIER

3

DOSSIER PEUPELEMENTS FORESTIERS

Woody species composition, structure and diversity of vegetation patches of a Sudanian savanna in Burkina Faso
P. SAVADOGO, M. TIGABU, L. SAWADOGO, P. C. ODÉN

5

***Platonia insignis* Mart. species richness in secondary forests of north-eastern Pará, Brazil**
M. DO SOCORRO FERREIRA, M. MELO

21

Valoriser et conserver les ressources forestières méditerranéennes : rôle potentiel des champignons mycorhiziens associés à la strate arbustive pionnière

29

R. DUPONNOIS, L. OUAHMANE, A. GALIANA, M. HAFIDI, Y. PRIN, B. DREYFUS

LE POINT SUR...

Évaluation du stock de carbone et de la productivité en bois d'un parc à karités du Nord-Cameroun

39

R. PELTIER, C. NJITI FORKONG, M. NTOUPKA, R. MANLAY, M. HENRY, V. MORILLON

INFOS BOIS

Valorisation du bois de pin d'Alep par déroulage : optimisation de son étuvage
A. DAoui, J. DOUZET, R. MARCHAL, A. ZERIZER

51

Déterminer l'origine des bois tropicaux en utilisant des isotopes du strontium
M.-L. HAVARD, E. DEFRÉMONT, A. ZAREMSKI, C. SALES

65

LA CHRONIQUE ÉCONOMIQUE

Filière bois d'énergie burkinabé : structuration des prix et analyse de la répartition des bénéfices

75

B. OUEDRAOGO

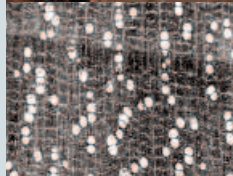
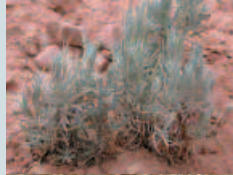
À TRAVERS LE MONDE

L'atelier de description anatomique de bois africains du réseau Prota
D. LOUPPE, P. DÉTIENNE, M. CHAUVET








89

VOS LECTURES

4 – 38 – 74 – 92





	EDITORIAL	
	Can ecology save the planet?	3
	E. LOFFEIER	
	DOSSIER	
	FOREST STANDS	
	Woody species composition, structure and diversity of vegetation patches of a Sudanian savanna in Burkina Faso	5
	P. SAVADOGO, M. TIGABU, L. SAWADOGO, P. C. ODÉN	
	<i>Platonia insignis</i> Mart. species richness in secondary forests of north-eastern Pará, Brazil	21
	M. DO SOCORRO FERREIRA, M. MELO	
	Use and conservation of Mediterranean forest resources: the potential role of mycorrhizal fungi in association with pioneer shrub storeys	29
	R. DUPONNOIS, L. OUAHMANE, A. GALIANA, M. HAFIDI, Y. PRIN, B. DREYFUS	
	FOCUS	
	Evaluation of carbon stocks and fuelwood productivity in a shea tree zone in northern Cameroon	39
	R. PELTIER, C. NJITI FORKONG, M. NTOUPKA, R. MANLAY, M. HENRY, V. MORILLON	
	WOOD AND TIMBER NOTES	
	Optimisation of steaming prior to rotary peeling of Aleppo pine	51
	A. DAQUI, J. DOUZET, R. MARCHAL, A. ZERIZER	
	Using strontium isotopes to determine the provenance of tropical timber	65
	M.-L. HAVARD, E. DEFRÉMONT, A. ZAREMSKI, C. SALES	
	ECONOMIC REVIEW	
	The fuelwood sector in Burkina Faso: price structure and analysis of profit distribution	75
	B. OUEDRAOGO	
	ACROSS THE GLOBE	
	The Prota network's workshop on anatomical descriptions of African timber species	89
	D. LOUPPE, P. DÉTIENNE, M. CHAUVET	
	BOOK REVIEW	4 – 38 – 74 – 92